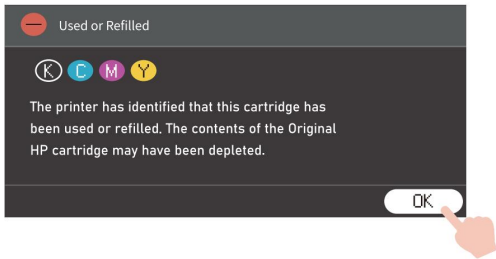
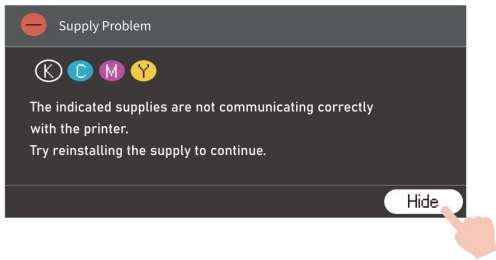


- **Note 1:** When your printer displays "Used or Refilled", press **OK**.



- **Note 2:** When your printer displays "Supply Problem", press **Hide**, then open and close the front cover.



HP W2180&2190A/X Series

Chip Transfer Instruction

YZ000008862 A 297x210mm

Tools Included



Tweezers (Tool #1)

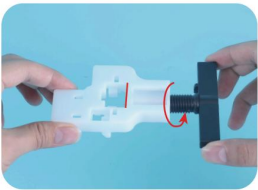


Pliers (Tool #2)

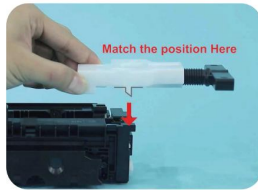


Chip Recycle Drill (Tool #3)

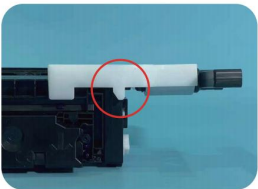
Removing the chip from original HP cartridge



A Unscrew the chip recycle drill counterclockwise to reset the drill to initial position, as above vertical red line.



B Mount the drill onto OEM toner cartridge. The plastic tip outlined in gray, should match the position as red arrow pointed.



C Push down the drill and you will hear a snap sound. Then the drill is firmly locked onto the cartridge.

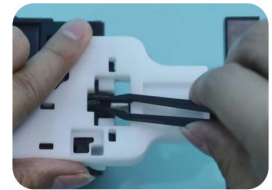


D Rotate the drill clockwise to drill out the chip.

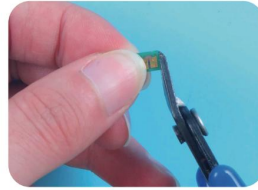
1



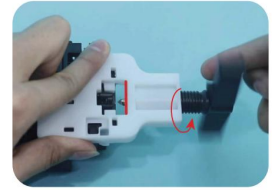
E The chip will be pushed out of the chip slot.



F Use tweezers to take out the chip.

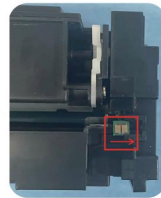


G Use the pliers to cut off the residual plastic or glue, if necessary.



H Unscrew the chip recycle drill back to the initial position, then remove it off the cartridge.

Installing the chip into the new cartridge



Using tweezers install the chip into the slot and push it flush against the end of the slot. Make sure the orientation of the chip is the same as in the photo above. Also, verify the orientation of the endplate as shown above.

2